

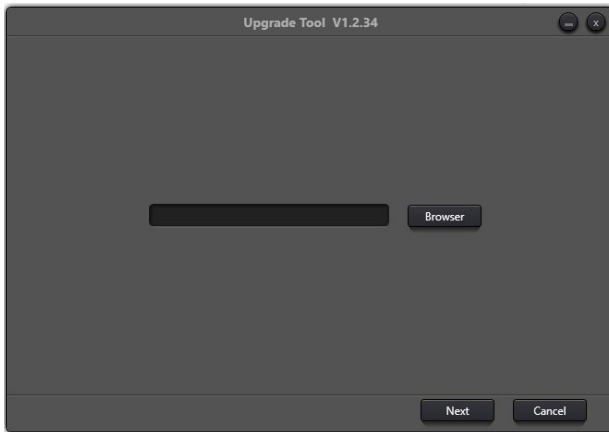


# **DSP-AEC-1010-DA**

## **Upgrade Instruction**

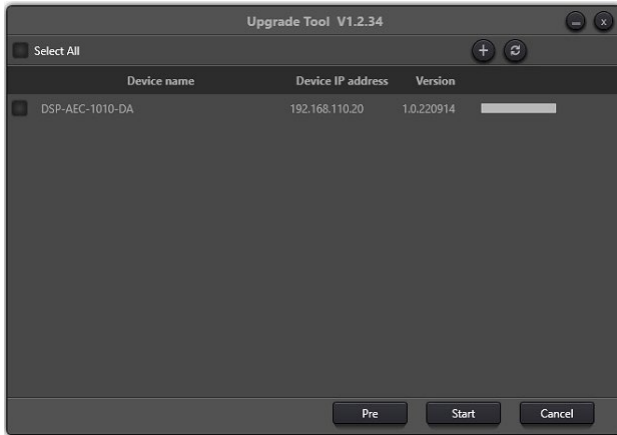
*Version: FW upgrade instruction v2.00*

1. Read the REDME file included in the FW upgrade package.
2. Be aware of different hardware releases DSP-AEC-1010-DA and choose correct FW file.  
HW1: No colorful chassis design and USB 2.0 Type A host port  
HW2: Colorful chassis design and USB 2.0 Type B host port.
3. Copy the update software “DSP\_Upgrade\_Tool\_en” and firmware files to a PC.
4. Connect the PC to the same network as the DSP.
5. Open the DSP Upgrade Tool V1.2.35

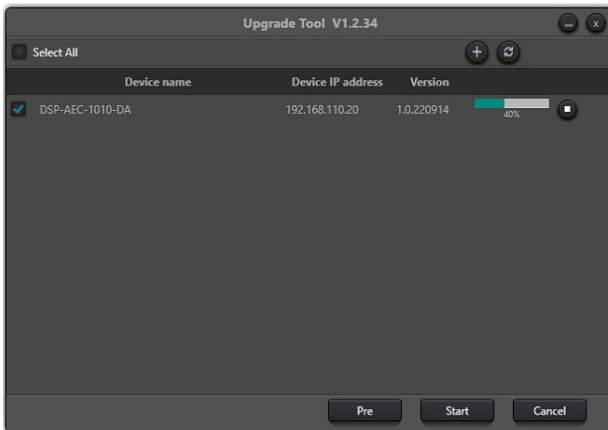


6. Browse for the FW BIN file and select. Then click on “Next”.

- The upgrade tool will now scan the network for available DSP-AEC-1010-DA. If the upgrade tool does not find any DSP:s make sure once again that the PC and DSP is connected to the same network.



- Select the DSP:s that you want to perform the upgrade on and click start.
- A progress bar will appear to show the installation process.



10. After the upgrade is done successfully, exit the upgrade tool and reboot the DSP.

